



Australian Climbing Association (Vic) Inc.

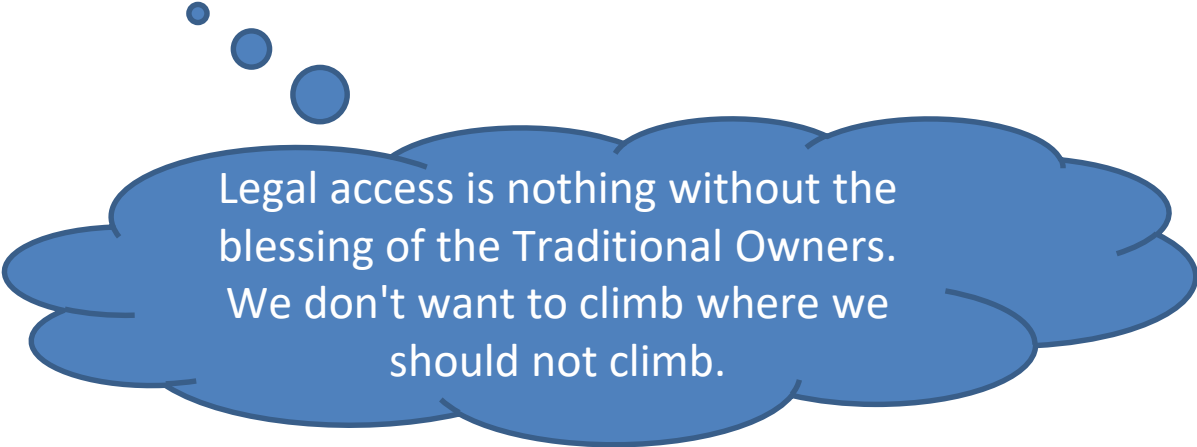
✓ *Access. By climbers. For climbers.*

<http://vic.climb.org.au/>

Welcome to the ACAV  
Incorporation Meeting

# Learning and Respect


To work with Traditional Owners to develop a much deeper understanding of Aboriginal Cultural Heritage by climbers, and to ensure that the requirements of the Aboriginal Heritage Act (2006) are being correctly interpreted and applied by land managers.



Legal access is nothing without the blessing of the Traditional Owners. We don't want to climb where we should not climb.

# ACAV Volunteers

- Jackie Bernardi
- Simon Carter
- Lauren Coman
- Hanh Le
- Kevin Lindorff
- Dick Lodge
- Neil Monteith
- Mike Rockell
- Glenn Tempest
- Matthew Tait
- Mike Tomkins
- Goshen Watts
- Mark Wood



Most active  
volunteers, strategy  
& setup

Plus 277 paid  
members in 3  
weeks

# ACAV - Legal Purpose

To be the pre-eminent representative body for climbing access in Victoria.

A blue cloud-like shape with a dark blue outline, containing the text "NB: Access only".

NB: Access only



# GRAMPIANS CLIMBING BANS

**70%**  
bouldering  
banned

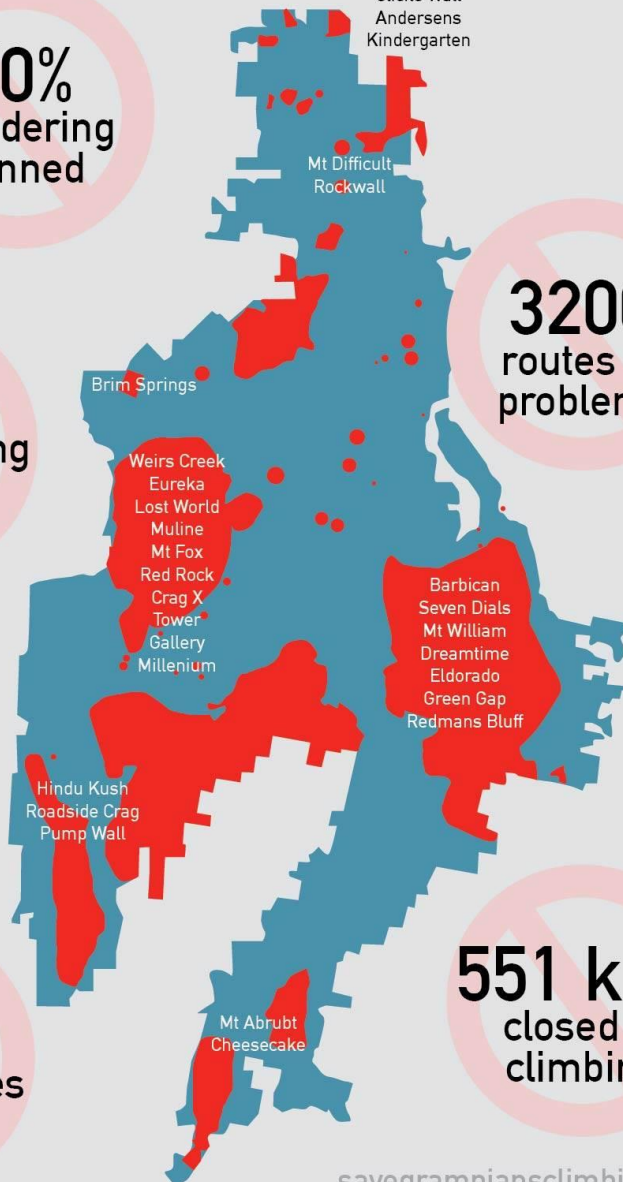
**50%**  
sport climbing  
banned

**3200**  
routes or  
problems

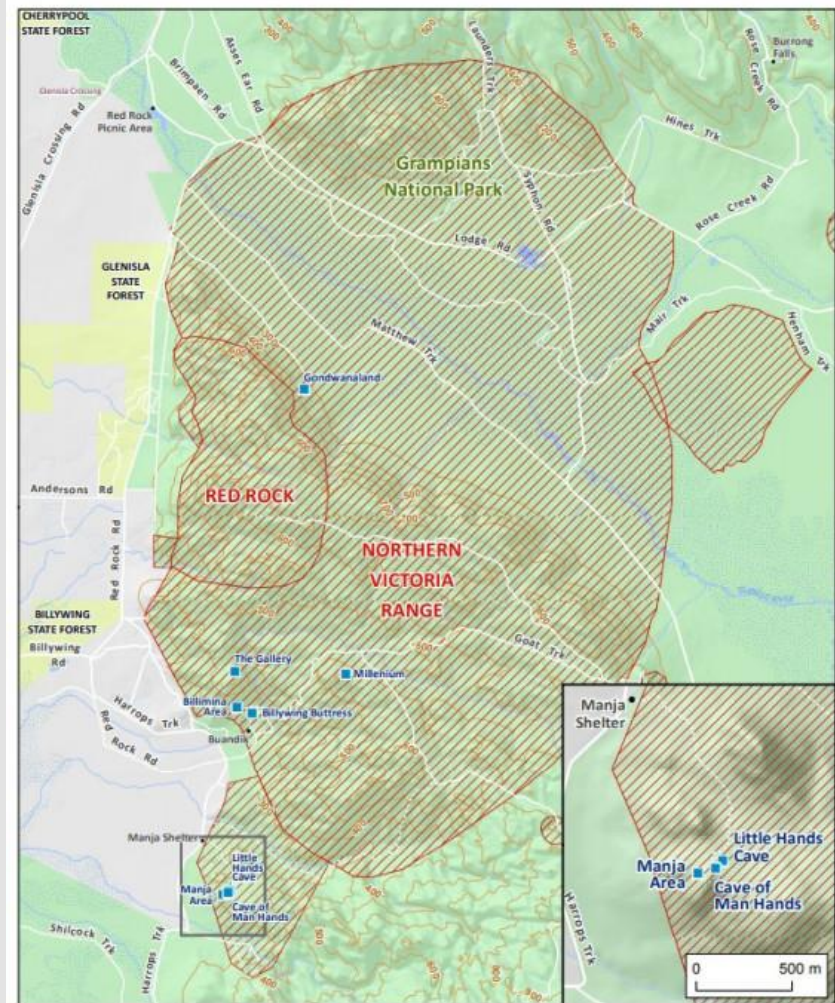
**\$1611**  
climbing fines

**551 km<sup>2</sup>**  
closed to  
climbing

Summerday Valley  
Hollow Mountain Cave  
Sandinista Wall  
Amnesty  
Crank Start  
Loopeys  
Clicke Wall  
Andersens  
Kindergarten



savegrampiansclimbing.org



## Eight Focus Areas

- Eight focus sites where signage will be installed and compliance activities occurring
- Protected areas - restrictions apply
- Parks Victoria Visitor Sites
- Grampians National Park
- State Forest

LOCALITY  
REGIONS



- Parks Victoria Act 2018
- Major access issue

# **Parks Victoria Act 2018**


**No. 19 of 2018**

## **TABLE OF PROVISIONS**

<i>Section</i>	<i>Page</i>
<b>Part 1—Preliminary</b>	<b>1</b>
1 Purpose	1
2 Commencement	2
3 Definitions	2
4 Transport Integration Act 2010	4
<b>Part 2—Establishment of and general provisions about Parks Victoria</b>	<b>5</b>
<b>Division 1—Establishment, functions and powers of Parks Victoria</b>	<b>5</b>
5 Establishment of Parks Victoria	5

# ACAV Volunteers

- Jackie Bernardi
- Simon Carter
- Lauren Coman
- Hanh Le
- Kevin Lindorff
- Dick Lodge
- Neil Monteith
- Mike Rockell
- Glenn Tempest
- Matthew Tait
- Mike Tomkins
- Goshen Watts
- Mark Wood



Most active  
volunteers, strategy  
& setup

Plus 277 paid  
members in 3  
weeks

# ACAAQ Support

- David Reeve
- Chris Williams
- Daniel Peatey
- Leo Stan
- Neil Jenman



Legal - Technical - Financial - Strategic



THE NORTH FACE PRESENTS WITH CLIF BAR A SENDER FILMS PRODUCTION

# VALLEY UPRISING

YOSEMITE'S ROCK CLIMBING REVOLUTION



"THE BEST CLIMBING FILM EVER MADE."

RED BULL MAGAZINE

GRAND PRIZE

BANFF  
MOUNTAIN  
FILM FESTIVAL

"A PALPABLE JOURNEY THAT JUMPS OFF THE SCREEN...  
I WANTED THE ILLICIT FREEDOM TO CONTINUE FOREVER."

NATIONAL GEOGRAPHIC ADVENTURE



**POWERED BY CLIMBERS**

[www.accessfund.org](http://www.accessfund.org)





# OUR MISSION

[Meet the Access Fund](#) / [Our Mission](#)

Today, 1 in 5 climbing areas in the United States are threatened—whether it's private land lost to development, public land managers over-regulating climbing, or climber impacts degrading the environment, the list of threats is long and constantly evolving. **At Access Fund, we are on a mission to keep climbing areas open and conserve the climbing environment, and we want you to join us.**

No one loves our climbing landscapes and the experiences they offer quite the same way that climbers do. But we must be willing and committed to fight for them. Not just for access, but for the integrity of these amazing places. As our sport continues to grow in popularity, overcrowding is stressing our outdoor landscapes beyond their ability to recover naturally. This not only threatens access, but it degrades the climbing experience that we hold so dear.

## We Are Climbing Advocates

We are a community of climbing advocates who love our climbing landscapes and the experiences they offer



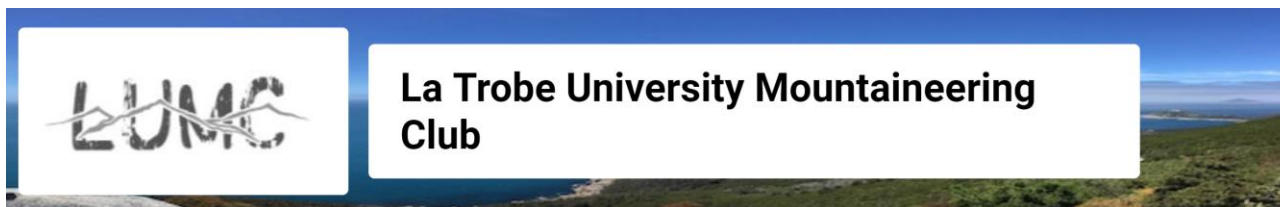
Support from  
corporate  
partners

# An Access Fund is not a Climbing Club

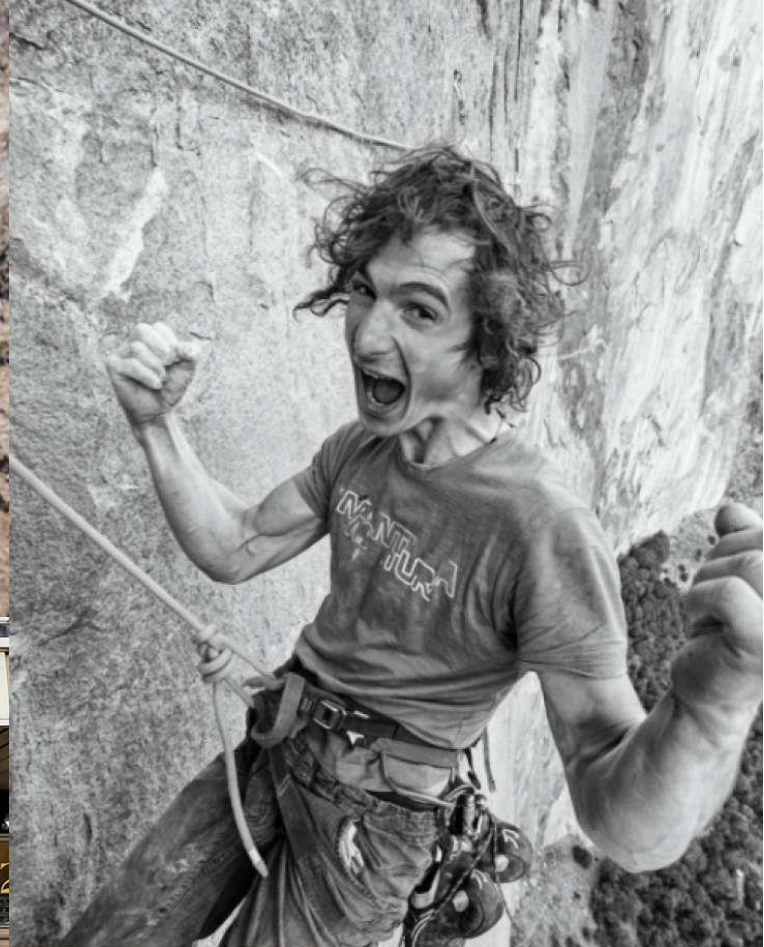
Also join your club of choice if you wish to be a club member



**SPORT CLIMBING  
VICTORIA**







Yosemite Climbing Now Legitimate



TOKYO ● 2020





# GRAMPIANS CLIMBING BANS

**70%**  
bouldering  
banned

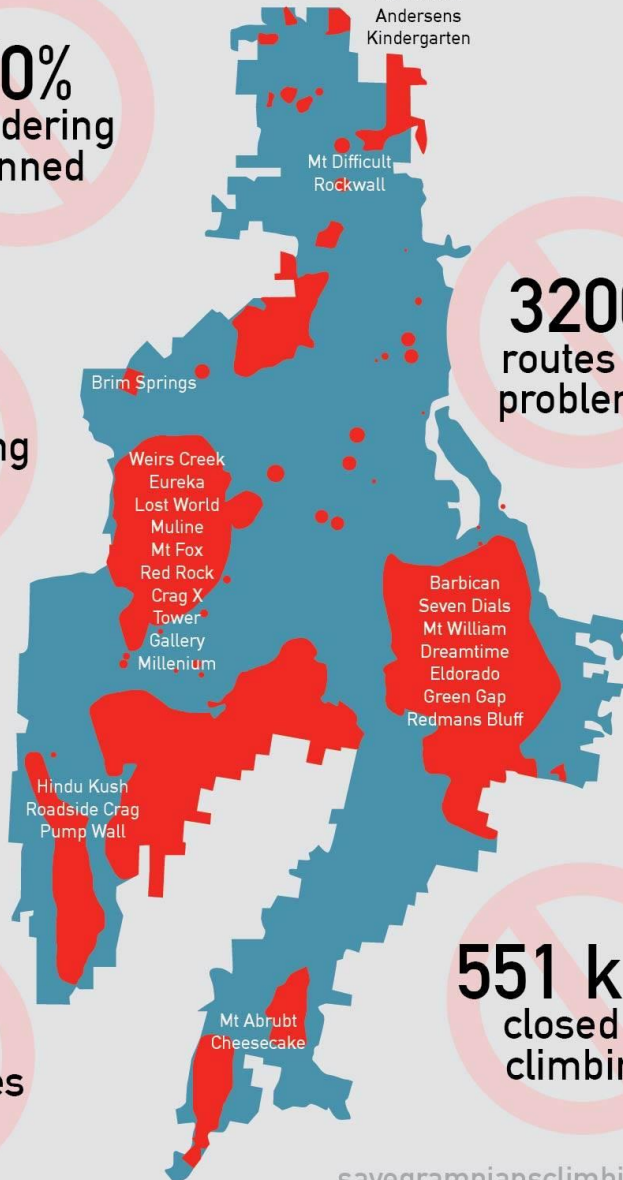
**50%**  
sport climbing  
banned

**3200**  
routes or  
problems

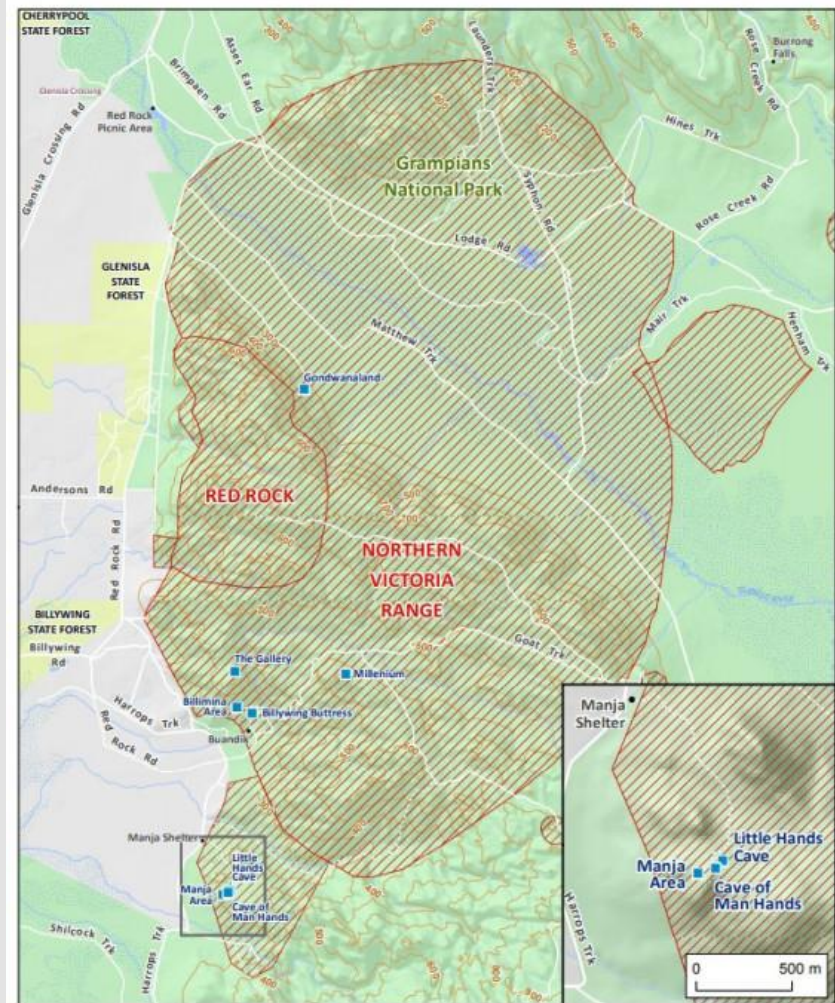
**\$1611**  
climbing fines

**551 km<sup>2</sup>**  
closed to  
climbing

Summerday Valley  
Hollow Mountain Cave  
Sandinista Wall  
Amnesty  
Crank Start  
Loopeys  
Clicke Wall  
Andersens  
Kindergarten



savegrampiansclimbing.org



## Eight Focus Areas

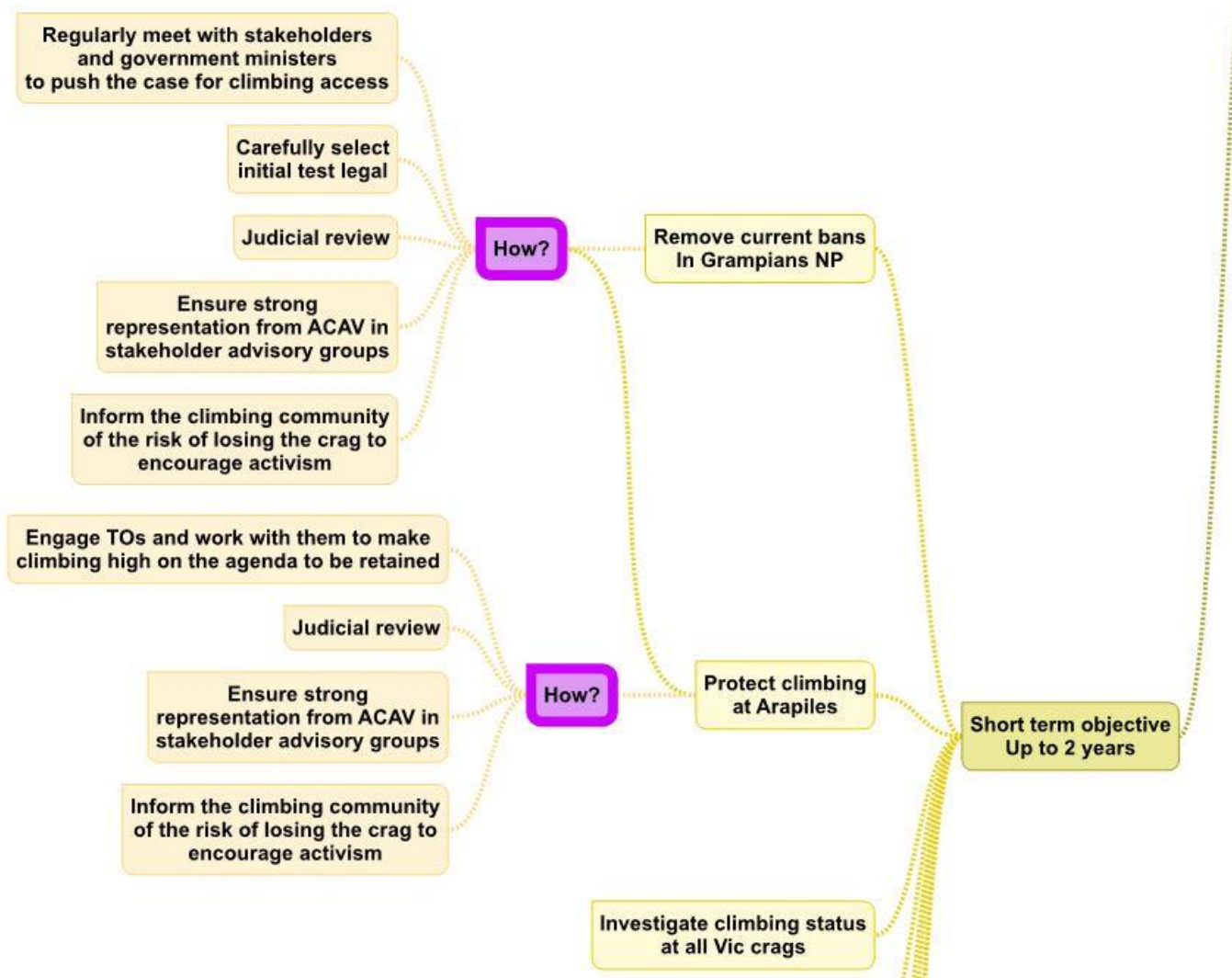
- Eight focus sites where signage will be installed and compliance activities occurring
- Protected areas - restrictions apply
- Parks Victoria Visitor Sites
- Grampians National Park
- State Forest

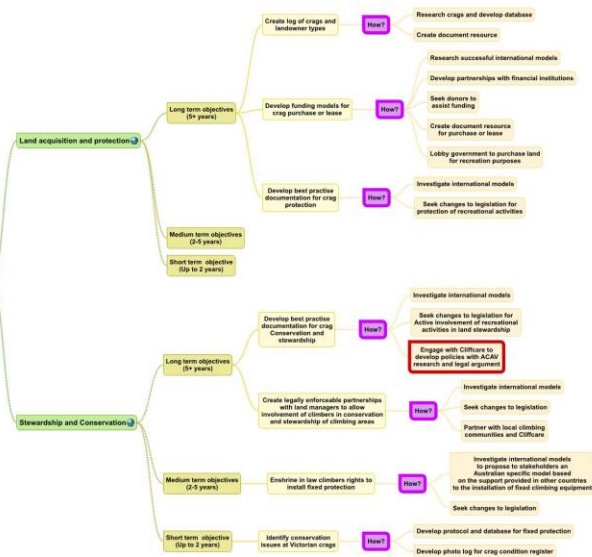
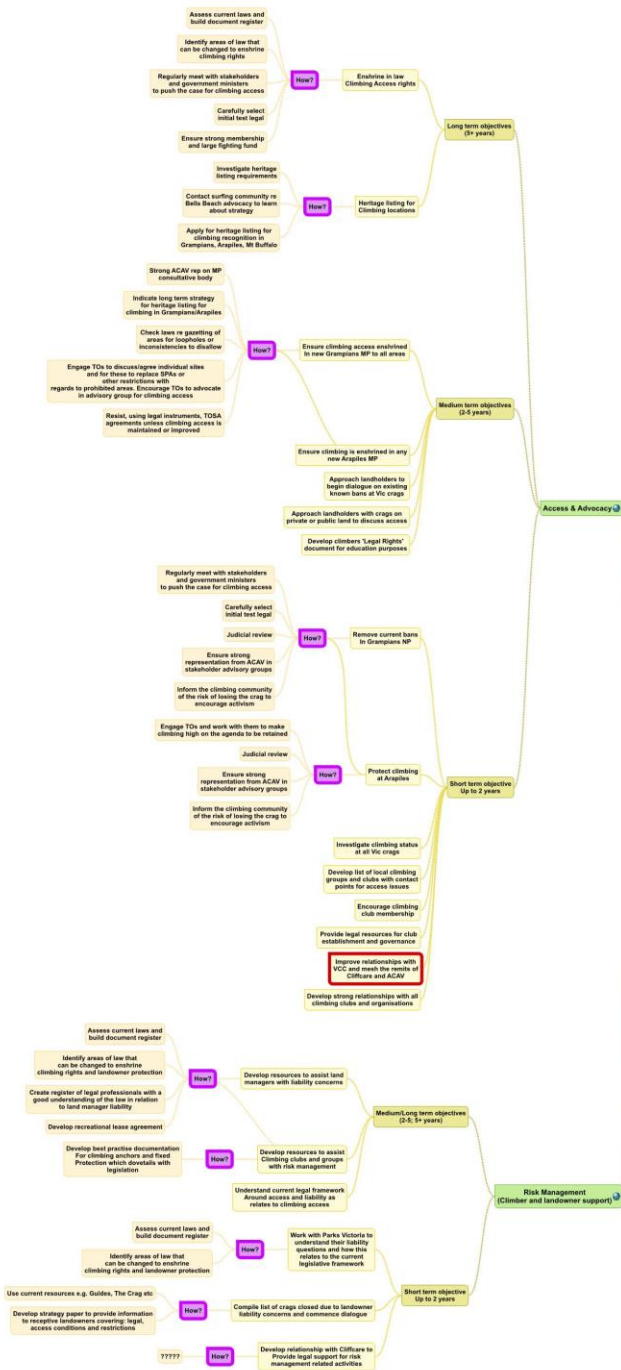
LOCALITY  
REGIONS



- Parks Victoria Act 2018
- Major access issue

# ACAV Strategy – Short Term









## ACAV MEMBERSHIP



NOTIFICATIONS

0



DASHBOARD



USERS

5



MEMBERS

277



ORDERS



PROMO CODES



EXPIRING MEMBERS



## DASHBOARD

DASHBOARD

Welcome Michael!

### STATISTICS

 Total  
Members

**277**  
ALL TIME

 New  
Members

**277**  
THIS YEAR

 2019  
Income

**\$4,155.00**  
THIS YEAR

## Analytics

All ↕

Apr 1, 2019 → May 16, 2019

Monthly ↕

Gross volume

**\$16,581.00**

New customers ⓘ

**66**

Successful payments

**328**

# British Mountaineering Council

(Company Limited by Guarantee)  
(02874177)

Partner  
Organisations

Existing charitable subsidiary

Subsidiary or sub-group  
for consideration

Proposed joint subsidiary

Mountain Heritage Trust  
(MHT)

BMC Wales/Cymru

Competitive Activities

BMC Access and  
Conservation Trust  
(ACT)

Commercial

Existing joint subsidiary

BMC Land and Property  
Trust

Mountain Training Trust (PyB)





# Members

Volunteer

Clubs

Local Areas

Direct Engagement

## Members' Assembly

President

Specialist Committee Chairs

10 Local Area Representatives

4 Independent Member representatives

1 Partners' Assembly representative

AGM + Rights

Rights + Reserved Matters

Working Groups

Specialist Committees

## Partners' Assembly

Partner

Other partners

Funded Partners

Mountaineering Scotland

Paid

Staff

Management Team

SLT

Patrons

## Board of Directors (12)

Independent Chair

President

Mountaineering Scotland

2 x Members' Assembly Directors

Funded Partners

Members' Assembly Club Director

CEO

Finance Director

3 x Independent Directors

Nominations Committee

Independent Chair

President

MA Director

2 x Independent Directors

Fin/Audit Committee

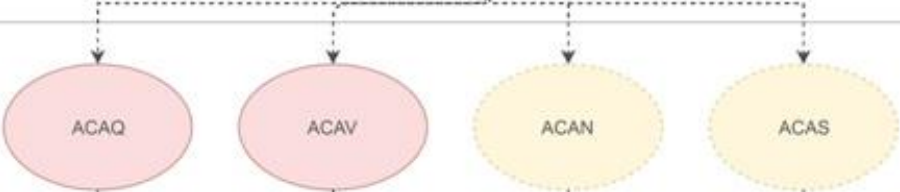
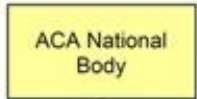
Independent Director

Finance Director

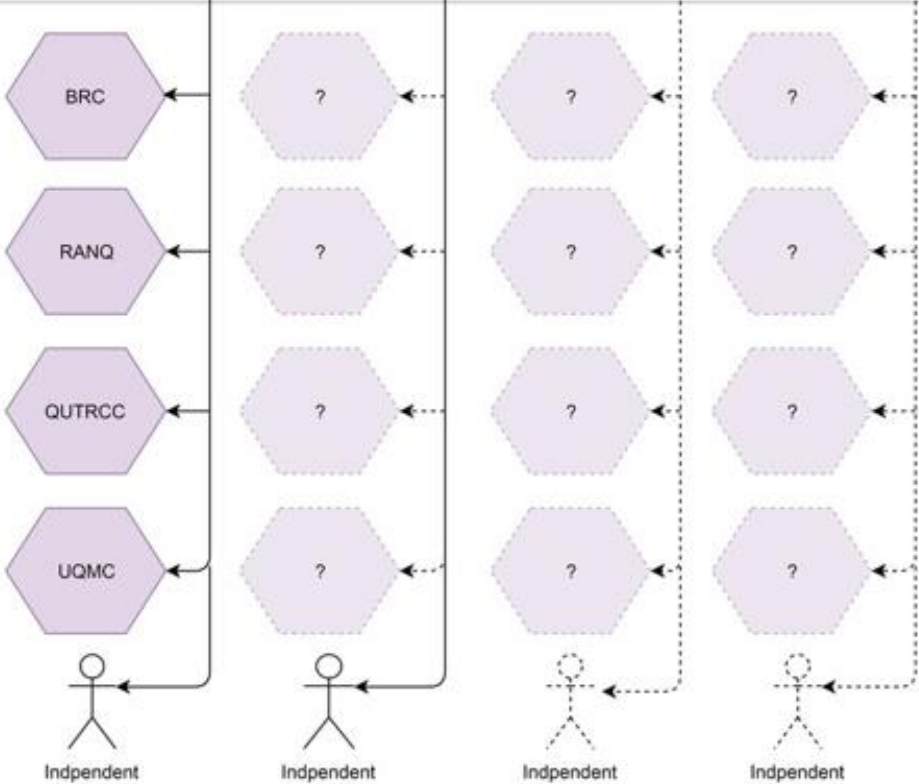
MA representative

+ others as required

The national body has no legal standing but serves as a virtual holding point for stuff like branding, common purpose, and shared administrative resources such as web sites etc.



Each access entity is an independent association incorporated under the laws of the relevant state



Climbing clubs, regardless of legal structure can affiliate with the relevant state access entity. This means club members are automatically associate members of the access entity



# ACAV Finance

Mark Wood – nominee for ACAV Treasurer

# ACAV Timeline

- Incorporation Meeting – 16<sup>th</sup> May 2019
- Annual General Meeting – 30<sup>th</sup> May 2019
  - Trinity Grammar School, Kew at 6.30pm

# ACAV Incorporated Voting

- Members vote to register as a legally incorporated entity

# Q&A - Any Other Business